



Catasauqua Middle School 2022-23

Health & Safety Practices



- Handwashing and respiratory etiquette
- Routine cleaning, disinfecting, sanitizing, and maintaining healthy facilities
- [2022-23 CASD Health & Safety Plan](#)

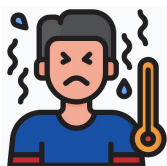
Attendance

- Regular attendance is essential to success in school.
- Children lose opportunities to learn when they miss school.
- Excessive absenteeism generally results in decreased academic achievement.
- Check with teachers to stay on top of classwork and assignment when absent from school.

**Click here to access the
Catasauqua Middle School
Building Handbook
[2022-2023 CMS Parent/Student
Handbook](#)**



Nurse's Office

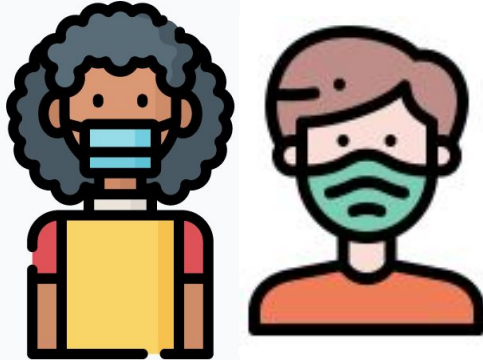


- Stay home if unwell and go home if feeling unwell while at school
- Contact tracing in combination with isolation and quarantine
- When a child is sick, the child should not report to school.
- Parents/guardians should contact the school nurse and their healthcare provider to discuss COVID-19 symptoms and possible quarantine and/or isolation.
- If your child is absent or required to isolate/quarantine please have your child check their Google Classroom to complete classwork, assignments or homework during their absence. They may contact their teachers through Google Classroom as well.

Meals

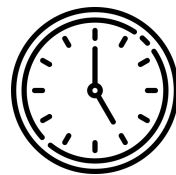
- All students will be eligible for Free breakfast and lunch this year. Ala carte items will not be served.
- Breakfast - Students can pick-up a breakfast located at a Kiosk upon entering the building and eat in their homeroom.
- Lunches - Students will utilize the CMS Cafeteria for lunches and will use their pin numbers when receiving a lunch.

Masking



- Face coverings/masks will be optional for all students and staff in buildings and on school vehicles (buses, vans, etc.). State orders and/or local data may result in modifications to the District's face covering practices.

Daily Schedule



Catasauqua Middle School opens for all students at 7:45 a.m. **Students are not allowed on campus before 7:45 AM.** Upon dismissal, students should immediately exit the building, through the main doors, at their designated dismissal time unless involved in after-school activities or functions.

CMS Standard Daily Schedule [CMS Bell Schedule 22-23](#)

- 7:45 AM** Main doors open for all students
 - 7:52 AM** Homeroom begins
 - 2:15 PM** Dismissal for all Parent Pick-Up & 7th and 8th Grade Walkers
 - 2:20 PM** Dismissal for 5th and 6th Grade Walkers & BUS Students
- All schedules are based on a five-day cycle.

Teaching and Learning

[2022-2023 Grade Level Flyer/Supply Lists](#)

- [2022-23 CASD Student iPad Use Agreement](#)
- All students will be provided with a district owned iPad K-12
- The iPad technology fee is \$10
- Students in grades K-8 will use [Google Classroom](#) as their learning management system
- Students in grades 9-12 will use [Canvas](#) as their learning management system
- The district will assess students' academic needs through the use of high-quality screeners for students in grades K-4 and high-quality ELA and math diagnostics in grades K through high school. The school district will utilize technology tools to create personalized learning pathways for students.



Transportation



- Transportation Dept. Contact Info:
Phone: 610-264-3192; extension 2
Email: transportation@cattysd.org
- You may view your child's bus information by logging into PowerSchool - look for Bus Information

Communication

- [PowerSchool Parent Portal](#) - Access teacher assignments, student schedules, and report cards
- Sign up for [Get the Remind app](#) - Text Messaging Tool used by CASD teachers and administration

*Please call the Main Office if you need assistance setting up your PowerSchool or Remind account - 610-264-4341.

Arrival & Dismissal

Click on the following links to view the Map for specific traffic patterns for our [CMS Arrival Map](#) and [CMS Dismissal Map](#)

CMS Arrival 2022-23

Homeroom is from 7:52 AM - 8:07 AM. Once students enter their designated entrance door, see below, students report directly to their homeroom on the first day of school. Lockers will be optional for students in grades 6 - 8.

- **Bus Students:** Students will enter the doors by the tech ed room and proceed to their designated homeroom.
- **5th Grade:** enter through the main doors and report directly to their designated homeroom.
- **6th Grade:** enter through side cafeteria doors and report directly to their designated homeroom.
- **7th Grade:** enter through the below exterior doors before proceeding under the bridge
- **8th Grade:** enter through the doors located by the memory garden and report directly to their designated homeroom.

CMS Dismissal 2022-2023

All students will exit through the main entrance of the Middle School and proceed off campus. We will operate on two staggered dismissal times. The dismissal times are as follows:

- 2:15 PM** - Dismissal for all Parent Pick-Up & 7th and 8th Grade Walkers
- 2:20 PM** - Dismissal for 5th and 6th Grade Walkers & BUS Students