

## Catasauqua Middle School - Return to Learn 2021-2022

### Health & Safety Protocols



- Masking in accordance with CDC/PA Department of Health and PA Department of Education orders/mandates or in response to local data
- Handwashing and respiratory etiquette
- Physical distancing to the greatest extent feasible
- Adjusting ventilation systems to introduce additional outside air exchange to introduce fresh air
- Cleaning, disinfecting, sanitizing, and maintaining healthy facilities

### Masking



- Universal indoor masking is recommended for all teachers, staff, students, and visitors to K-12 schools, regardless of vaccination status.
- Per the CDC's order, masks are required to be worn on school buses
- State orders and/or local data may result in modifications to the District's face covering practices

### Transportation



- Per the CDC's order, masks are required to be worn on school buses
- CASD will clean and disinfect frequently touched surfaces
- Walking to school and parent drop-off/pick-up are encouraged

### Communication



- [PowerSchool Parent Portal](#) - Access teacher assignments, student schedules, and report cards



- Sign up for [Get the Remind app](#) - Text Messaging Tool used by CASD teachers and administration

\*Please call the Main Office if you need assistance setting up your PowerSchool or Remind account - 610-264-4341.

**Click here to access the  
Catasauqua Middle School  
Building Handbook  
[2021-2022 CMS Parent/Student  
Handbook](#)**



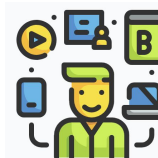
Catasauqua Middle School opens for all students at 7:45 a.m. **Students are not allowed on campus before 7:45 AM.** Upon dismissal, students should immediately exit the building, through the main doors, at their designated dismissal time unless involved in after-school activities or functions.

#### CMS Standard Daily Schedule

**7:45 a.m.** Main doors open for all students  
**7:47 a.m.** Homeroom begins  
**1:50 p.m.** Dismissal begins  
**1:50 p.m. - 2:20 p.m.** Student academic assistance  
 All schedules are based on a five-day cycle.

### Teaching and Learning

- All students will be provided with a district owned iPad K-12; The iPad technology fee is \$10
- Students in grades K-8 will use [Google Classroom](#) as their learning management system
- Students in grades 9-12 will use [Canvas](#) as their learning management system
- The district will assess students' academic needs through the use of high-quality screeners for students in grades K-4 and high-quality ELA and math diagnostics in grades K through high school. The school district will utilize technology tools to create personalized learning pathways for students.



### Nurse's Office

- Stay home if unwell and go home if feeling unwell while at school
- Contact tracing in combination with isolation and quarantine
- When a child is sick, parents/guardians should contact the school nurse and their healthcare provider to discuss COVID-19 symptoms and possible quarantine and/or isolation.
- Refer to the [CDC COVID-19 Symptoms webpage](#) for more information related to COVID-19 symptoms.

### Meals

- All CMS students will be eligible for Free breakfast and lunch this year. Students will pay for ala carte items only.
- Breakfast - CMS will be offering again a "Grab and Go" breakfast program. At dismissal time, students can select a breakfast bag from the lobby as they exit the front doors for walkers and the side door for bus students. Students will eat the breakfast at home the next morning before coming to school.
- Lunches - In order to implement mitigation strategies to promote the health and safety of all staff and students, we will operate two lunch locations: Cafeteria and Gymnasium. We will rotate classes through each location.

### Arrival & Dismissal

Click on the following links to view the Map for specific traffic patterns for our CMS Arrival and Dismissal Procedures

#### [CMS Arrival 2021-2022](#)

**Homeroom is from 7:47 AM - 8:07 AM.** Once students enter their designated entrance door, see below, students report directly to their homeroom and attendance will be taken during 1st period.

- **Bus Students:** Students will enter the doors by the tech ed room and proceed to their designated homeroom.
- **5th Grade:** enter through the main doors and report directly to their designated homeroom.
- **6th Grade:** enter through side cafeteria doors and report directly to their designated homeroom.
- **7th Grade:** enter through the below exterior doors before proceeding under the bridge
- **8th Grade:** enter through the doors located by the memory garden and report directly to their designated homeroom.

#### [CMS Dismissal 2021-2022](#)

All students will exit through the main entrance of the Middle School and proceed off campus. We will operate on a staggered dismissal schedule. The dismissal times are as follows:

- **Parent Pick-up** (all grades) - 1:50pm
- **Bus Students** - 1:50pm
- **5th Grade Walkers** - 1:54pm
- **6th Grade Walkers** - 1:56pm
- **7th Grade Walkers** - 1:58pm
- **8th Grade Walkers** - 2:00pm