



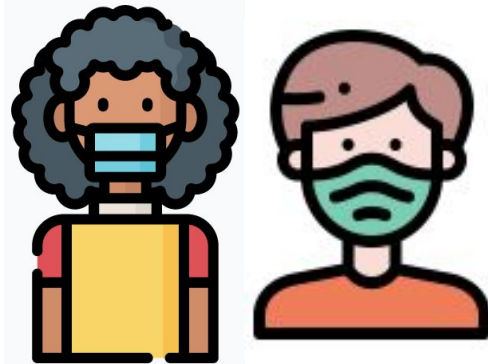
## Sheckler Elementary School - Return to Learn 2021-2022

### Health & Safety Protocols



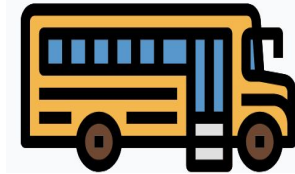
- Masking in accordance with CDC/PA Department of Health and PA Department of Education orders/mandates or in response to local data
- Handwashing and respiratory etiquette
- Physical distancing to the greatest extent feasible
- Adjusting ventilation systems to introduce additional outside air exchange to introduce fresh air
- Cleaning, disinfecting, sanitizing, and maintaining healthy facilities

### Masking



- Universal indoor masking is recommended for all teachers, staff, students, and visitors to K-12 schools, regardless of vaccination status.
- Per the CDC's order, masks are required to be worn on school buses
- State orders and/or local data may result in modifications to the District's face covering practices

### Transportation



- Per the CDC's order, masks are required to be worn on school buses
- CASD will clean and disinfect frequently touched surfaces
- Walking to school and parent drop-off/pick-up are encouraged

### Communication



- [PowerSchool Parent Portal](#) - Access teacher assignments, student schedules, and report cards



- Sign up for [Remind](#) - Text Messaging Tool used by CASD teachers and administration

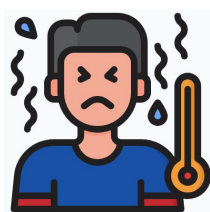
\*Please call the Sheckler Main Office if you need assistance setting up your PowerSchool or Remind account.

Click [here](#) to access the Sheckler Building Handbook



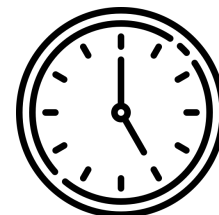
Mrs. Churetta:  
610-264-5601 option 3  
[churettaj@cattysd.org](mailto:churettaj@cattysd.org)

### Nurse's Office



- Stay home if unwell and go home if feeling unwell while at school
- Contact tracing in combination with isolation and quarantine
- When a child is sick, parents/guardians should contact the school nurse and their healthcare provider to discuss COVID-19 symptoms and possible quarantine and/or isolation.
- Refer to the [CDC COVID-19 Symptoms webpage](#) for more information related to COVID-19 symptoms.

### Daily Schedule



8:45 - 9:00 - Students enter Sheckler

9:05 - Homeroom Begins

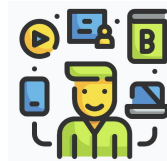
10:45 - 11:15 2nd Grade Lunch  
11:20 - 11:50 3rd Grade Lunch  
11:55 - 12:25 Kindergarten Lunch  
12:30 - 1:00 4th Grade Lunch  
1:05 - 1:35 1st Grade Lunch

2:25 - Dismissal for all Non - bus students

2:45 - All buses leave Sheckler

### Teaching and Learning

- All students will be provided with a district owned iPad K-12; The iPad technology fee is \$10
- Students in grades K-4 will use [Google Classroom](#) as their learning management system
- The district will assess students' academic needs through the use of high-quality screeners for students in grades K-4 and high-quality ELA and math diagnostics in grades K through high school. The school district will utilize technology tools to create personalized learning pathways for students.



### Arrival & Dismissal

[DROP OFF / PICK UP DIAGRAM MAP](#)

8:45 - 9:00 AM

All students enter Sheckler.

9:05 AM

All students must be in homeroom.

2:25 PM

All Walkers / Parent Pick Up Students are dismissed. Parents will meet students at designated exit doors assigned to each grade level.

2:45 PM

All buses leave Sheckler.